

AsymBio's Shanghai Fengxian Base Now Fully Operational

A Major Milestone in Commercial Biologics Manufacturing

AsymBio, a subsidiary of Asymchem Group, has announced the official commencement of commercial production at its Shanghai Fengxian Commercial Manufacturing Base. In response to rising global demand for ADCs and biologics CDMO services, the Fengxian base emerges as a strategically critical new commercial manufacturing hub in AsymBio's global network, accelerating the commercialization journey for its global clients.

Commercial Capabilities & Global Compliance

130,000+ m² facility

supporting NDCs, antibodies/TCEs, and recombinant proteins

Phase IA antibody capacity

equipped with 200 L/500 L/2,000 L single-use bioreactors and 20 m² lyophilizers for IND and late-stage supply

Phase IB NDC capacity

coming online in January 2026, featuring 100 L-200 L-500 L conjugation reactors and multi-scale lyophilizers

Designed to meet

the standards of major global regulatory authorities

R&D & Integrated Service Platform

R&D building broke ground in October 2025, spanning 20,000 m²

Leveraging **six core technology platforms**, including Amigo CHO™ and the Conjugation Toolbox, to optimize end-to-end development and manufacturing

QC, analytical, and operations centers under phased construction to support global clients

With the Fengxian site as a new cornerstone, AsymBio intends to strengthen its commercial synergy network, guided by the principle of **"R&D at the front end, production as the central hub, and global service delivery"**. This integrated approach enhances service quality and efficiency for leading global pharmaceutical companies and biotech firms alike, while accelerating the commercialization of innovative biopharmaceutical therapies.

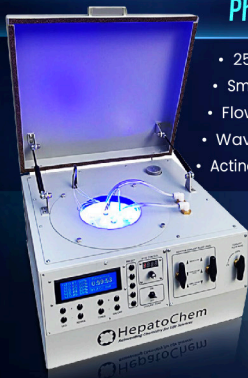


Enhanced Photo and Electrochemical Capabilities Driving Process Innovation

Asymchem brings over a decade of specialized expertise in **photochemistry** and **electrochemistry**, supported by strong partnerships with leading research institutions worldwide. To further support the evolving process development needs of our global clients, our Sandwich site now provides **full access** to these proven technology platforms—enabling more agile, locally supported innovation.

Photochemistry

- 254 nm to 808 nm
- Small and Medium Scale Screening
- Flow capabilities
- Wavelength and intensity screening
- Actinometry and characterisation studies

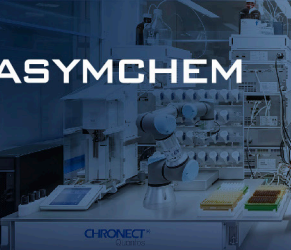


Electrochemistry

- Small and Medium Scale Screening
- Flow capabilities
- Constant current/Constant voltage methodologies
- Wide array of electrode materials
- Potentiometry and characterisation studies



Building on established technology platforms and specialized teams, Asymchem's Sandwich site provides end-to-end support from **route scouting** through **process development** to **production scale-up**. Through customized equipment and precise process solutions, we ensure efficient progression of each project from concept to commercialization, delivering reliable outcomes and enhanced value.



Driving the Future of Sustainable Medicines with Next-Generation HTE Innovation

Asymchem's Sandwich site is developing a **next-generation High-Throughput Experimentation (HTE) Platform**, representing a bold step towards sustainable medicines manufacturing and data-driven innovation.

This milestone is part of the Innovate UK Sustainable Medicines Manufacturing Innovation Programme (SMMIP), which drives collaboration across industry, academia, and government to transform the UK's innovation ecosystem.



*In collaboration with **Labman Automation**, our new platform will unlock*

Unprecedented exploration of chemical space

Enhanced, data-rich experimentation

The design of optimal and eco-friendly routes and chemical processes for pharmaceuticals and beyond

Asymchem is committed to delivering autonomous, data-driven, and sustainable solutions. Our new platform accelerates discovery and promotes **higher standards of sustainability** in pharmaceutical development.



UK
SANDWICH